

## Adapter for Scylla – V2

- Scylla trigger sensor uses hall transistor, which detect magnetic field. For its right function it has to be installed magnet to the trigger which is compatible with stock and aftermarket triggers.
- This adapter could not be used with Leviathan trigger, but you can buy compatible one [here in the Jefftron eshop](#).

- Place left trigger part on the top of the trigger like on the picture.  
Do not screw this top screw yet.



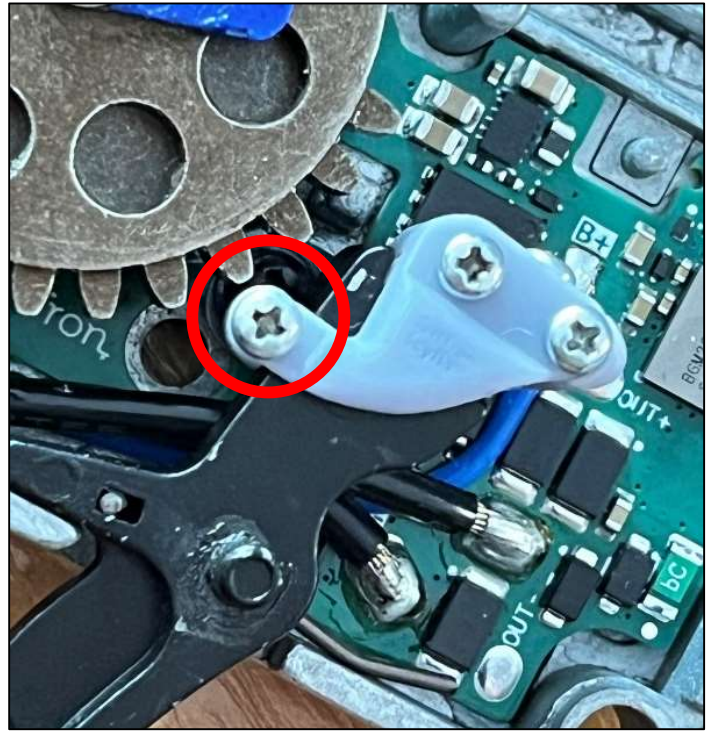
- **Gently screw 3 screws** on the right adapter part to assemble magnet adapter over the trigger



- **Top 4rd** screw on the adapter has function securing adapter on various trigger types.
- **Gently tighten the screw** to make adapter fit into the trigger



- Make sure adapter will not hit **sector gear teeth**, otherwise grind the adapter to fit better on the trigger

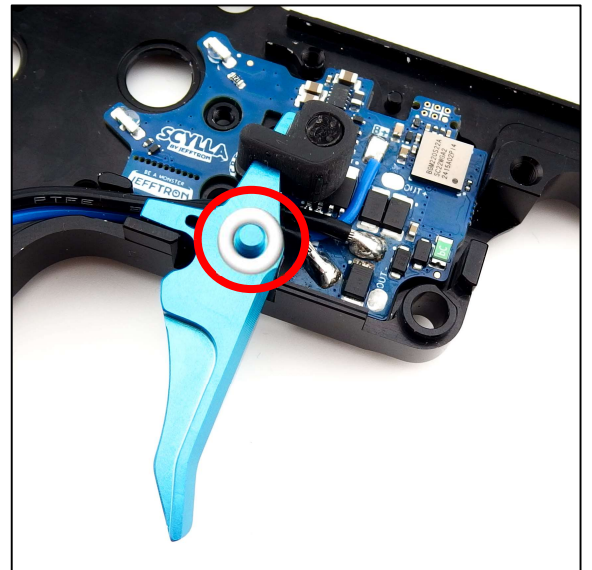


- Test if **trigger** with adapter has **smooth travel** inside the gearbox.

**If not then:**

**1)** Add 0,2 – 0,5mm high shim to the right side of trigger axis. You can use shims for the gears.

**2)** If the first step did not help, then you have to grind this edge on the right side of the gearbox. See picture below



Adapter has to be installed by an expert. He must know how to disassemble the replica.

**Warranty does not cover:** water immersion, defects or damage from accident, misuse, abuse, wrong installation, bad handling, any modification by user.

**Exclusion of liability:** Manufacturer Ing. Filip Němec is not liable for any damages, injuries or accidents of any kind resulting from the use of this product in the airsoft gun.



[www.jefftron.net](http://www.jefftron.net)